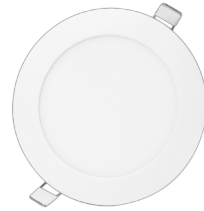


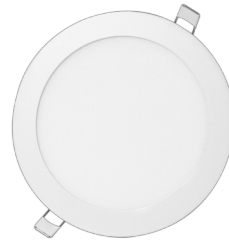
JLPR-3



JLPR-6



JLPR-9



JLPR-12



JLPR-15



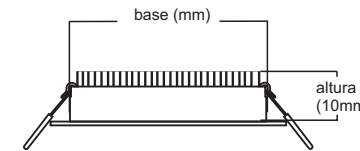
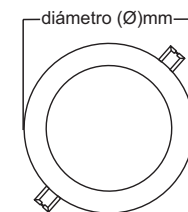
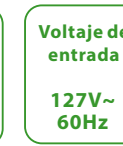
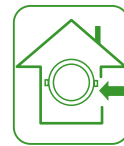
JLPR-18



JLPR-24

### ESPECIFICACIONES ELÉCTRICAS

MODELO	POTENCIA	CORRIENTE ELÉCTRICA	FLUJO LUMINOSO	DIMENSIONES
JLPR-3	3W	23mA	230 lm	ø80mm / ø60mm (base)
JLPR-6	6W	45mA	450 lm	ø120mm / ø110mm (base)
JLPR-9	9W	70mA	700 lm	ø150mm / ø135mm (base)
JLPR-12	12W	95mA	950 lm	ø170mm / ø155mm (base)
JLPR-15	15W	115mA	1200 lm	ø190mm / ø175mm (base)
JLPR-18	18W	140mA	1400 lm	ø220mm / ø195mm (base)
JLPR-24	24W	189mA	1800 lm	ø300mm / ø273mm (base)



NOM-003-SCFI-2014

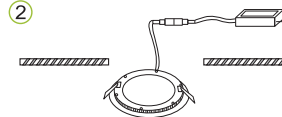
### DIAGRAMA DE INSTALACIÓN

①



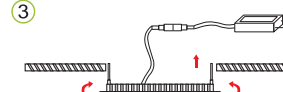
Cortar un orificio en el techo del tamaño de la base.

②



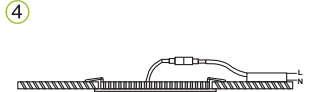
Verificar que la conexión (DC) esté asegurada a la fuente de alimentación.

③



Colocar la base del luminario dentro del orificio.

④



Ajustar el luminario y unirlo herméticamente al techo.